

US ELECTRONICS™

User's Guide for the UXTVRD3/-D/-X or UXTVRD3-E featuring Memory Lock™ 2-in-1 Cable TV Remote Control

www.uselectronics.com



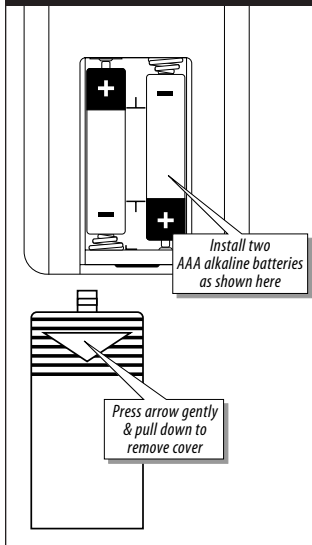
© 1998 US Electronics Components Corp. All rights reserved
Part Number USE13559, version 5.2
9804

before you begin

If you have a TV with a remote control, we recommend that you plug its power cord directly into a wall outlet if available (your cable installer may select an alternate setup).

Make sure to set your TV to channel 2, 3, or 4 as directed by your cable company.

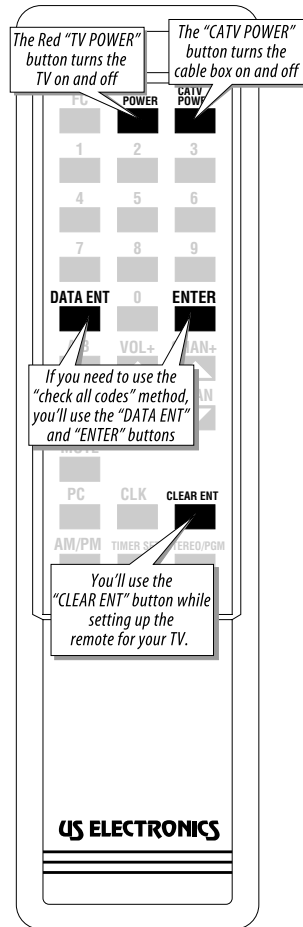
install batteries



Install two AAA alkaline batteries as shown here

Press arrow gently & pull down to remove cover

Take note of the buttons that you'll use to setup your remote control



The Red "TV POWER" button turns the TV on and off

The "CATV POWER" button turns the cable box on and off

If you need to use the "check all codes" method, you'll use the "DATA ENT" and "ENTER" buttons

You'll use the "CLEAR ENT" button while setting up the remote for your TV.

important note

Weak batteries may disrupt normal operation of the remote

We recommend that you use only AAA alkaline batteries.

Remotes without the Memory Lock™ feature may need to be reprogrammed when the batteries are removed. See the troubleshooting section for more info.

setting up your remote control

for your cable box

step 1	Press the [CLEAR ENT] button, then the [CATV POWER] button.
step 2	Enter the three-digit code for your cable box from the "cable box codes" chart below.
step 3	Press the [CATV POWER] button.
	Press the [CATV POWER] button again to test the remote. If your cable box turns on and off, proceed to the steps below to setup the remote for your TV. If your cable box <i>doesn't</i> turn on and off, verify that you are using the right code for your cable box (see the chart below), and perform steps 1 through 3 again.

If you have a manually-controlled TV it is not necessary to proceed any further. Manually-controlled TVs must be plugged into the rear of the converter so that your TV turns on and off with the cable box. Volume control for manual TVs will be handled through the cable box if it possesses volume control capability.

for your remote-controlled television

step 1	Make sure your TV is on. Press the [CLEAR ENT] button, then the [TV POWER] button.
step 2	Enter the three-digit code for your television from the "television codes" chart on the back of this sheet.
step 3	At this point you have two options depending on whether you want volume to be controlled through your cable box or through your TV: option 1: If you want volume to be controlled through your cable box, press [CATV POWER]. option 2: If you want volume controlled through your TV, press [TV POWER].
	Press the [TV POWER] button. If your TV turns on and off, you're all done. If your TV <i>doesn't</i> turn on and off, perform steps 1 through 3 again with the next available code for your TV brand. If none of the codes listed for your TV work, try the "check all codes" method (on the back of this sheet).

cable box codes

Zenith Z-TAC and PM series

008

NOTE

If you need to setup your remote for a cable box other than the models listed here, follow the instructions in the "other cable boxes" section on the other side of this sheet.

other cable boxes

Your remote is capable of operating many brands of cable boxes. Select the code for the converter box you need and apply it to the steps described in the “setting up your remote control” section on the front side of this sheet.

Be aware that some of the key markings on the remote might not match with the functions of the converter. If you have questions regarding the features of your cable box, check your owners manual first, or contact your cable operator.

Jerrold™ DP7/DQN/DPV/DPBB/Starcom/DL4	000	Tocom 5503A	014
Jerrold™ DRZ	001	Tocom 5503/5507	015
Jerrold™ DRX	002	Hamlin/Regal CR 6000/6600/6800	009
Jerrold™ CFT2000/CFT2200	013	Hamlin/Regal CR5000	011
Scientific-Atlanta Black 8510-8590	003	Regal/Hamlin CRP83, RC83, (CRP9)	010
Scientific-Atlanta Tan 8500	004	Pioneer 5000 and 6000 series	007
Scientific-Atlanta 8600	012	Zenith Z-TAC and PM series	008

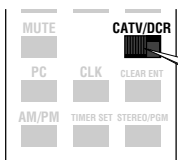
the “check all codes” method

Follow the steps outlined in this section if you’ve been unable to determine the correct code for your TV. This method “hunts” through all possible codes in the remote until it finds the code for your remote-controlled TV.

1. Manually turn ON your TV set.
2. Point the remote control at the TV and press the following sequence of keys: **[CLEAR ENT]**, **[TV POWER]**, **[0]**, **[0]**, **[0]**, and **[TV POWER]**. If the TV turns OFF, congratulations – you’re all done. *If the TV is still ON, continue at step 3 below.*
3. Press **[CLEAR ENT]**, **[TV POWER]**, **[DATA ENT]**, and **[TV POWER]** to check the *next* code. If the TV turns OFF, press **[ENTER]** to exit this procedure. *If the TV is still ON, continue at step 4 below.*
4. Repeat pressing **[DATA ENT]**, followed by **[TV POWER]**, until the TV turns OFF. When the TV turns OFF, press **[ENTER]** to save the code.

Please be patient: there are about 90 possible codes.

digital music terminal switch



Depending on which model remote you have, there may be a switch labeled either “CATV/DCR” or “CATV/DMX.” This switch **MUST** be in the CATV position to control your cable box and TV set.

television codes

try these first	GE	005	JVC	076	Magnavox	057	Mitsubishi	067
	NEC	024	Philips	057	Pioneer	046	Proscan	005
	RCA	005	Sony	081	Sylvania	057	Zenith	075

The codes listed in this box are for the most popular TVs. If your TV is made by one of these manufacturers, try the code listed here first. Otherwise, find your code in the chart below.

Akai	021	MTC	015	021	024	047	048	082
AOC	021	024	062	NEC	021	024	033	047
Candle	024	025	037	047	Panasonic	002	008	011
Capehart	079	Panasonic	000	005	021	022		
Citizen	024	025	037	047	Penney	024	061	070
	048	050	070			016	017	021
Concerto	047				Philco	037	057	077
Contec	003	004	051	084	Philips	057		
Craig	012	051			Pioneer	034	046	
Curtis Mathes	024	048	070		Portland	070		
CXC	051				Proscan	005		
Daewoo	021	042	043	050	070	079		
Datron	070				Proton	036	056	070
DynaTech	015				Quasar	008	011	
Electrohome	070				Radio Shack	041	051	070
Emerson	004	020	035	036	RCA	000	005	021
	044	045	051	052	Realistic	029		
	053	070	084	086	Sampo	024	058	060
Envision	024				Samsung	024	047	048
Fisher	010	029			Sanyo	010	028	029
Funai	044	051			Scott	044	070	
GE	005	008	011	022	Sears	001	010	029
	023	063	064	073	Sharp	014	031	041
Goldstar	021	047	054	070	Sony	007	081	
Harman Kardon	019				Soundesign	036	037	
Hitachi	006	027	038	040	SSS	021	051	
	068	069	070	085	Sylvania	008	016	017
Infinity	057					037	057	077
JBL	015				Tatung	015		
Jensen	026				Techwood	047		
JVC	032	076			Teknika	021	025	037
Kloss Novabeam	077					047	048	050
KMC	059					067	070	072
KTV	051	070			TMK	036	047	
Logik	074				Toshiba	029	030	
Luxman TV	047				Totevision	070		
LXI	029	030			Universal	022	023	
Magnavox	017	024	037	008	Vidtech	021		
	057	077	078	080	Wards	016	017	021
Marantz	024					024	036	041
MGA	021	024	036	067		064	065	074
Mitsubishi	009	021	036		Yamaha	021		
	066	067	083		Zenith	075		

troubleshooting guide

? Problem
My remote only works one of my devices (TV or cable box).

😊 Solution
Weak batteries may cause the remote to only operate one device. If this happens, simply replace them with new alkaline batteries and reprogram the remote.

? Problem
My Scientific-Atlanta cable box won't turn on.

😊 Solution
Scientific-Atlanta 8500-8590 series cable boxes don't have an ON button. Press any two number keys on the remote to turn the cable box on.

? Problem
I programmed the remote, but it won't work my TV.

😊 Solution
You may have entered the wrong code (or the correct code might not be listed). Try entering all of your TV manufacturer's codes again, starting with the manufacturer's popular code, if one is available.

If you are still unable to operate your TV, follow the instructions in the section titled the “check all codes” method.

? Problem
My remote control doesn't operate my combination TV/VCR.

😊 Solution
Most combination TV/VCRs have VCR tuners in them. This unit was not designed to operate a VCR. Your cable operator may have a solution for your situation.

? Problem
My remote control stopped working.

😊 Solution
Check the batteries and make sure the TV set and cable box are plugged into a live AC outlet. If you are sure the batteries are good, try rolling them with your finger to ensure a good connection. If the batteries were loose, removed to test, or replaced, you may need to reprogram your remote.*

* If your remote has Memory Lock™, you won't need to reprogram the remote control unless you want it to operate a different television.

? Problem
I can't figure out the remote's buttons.

😊 Solution
It may be necessary to review your cable box operating manual to familiarize yourself with the different buttons and features.

! IMPORTANT: Write down your TV and cable box codes on your Quick Programming Sticker (if supplied) or some other safe place where they can be located for future reference, if necessary.